

## WALNUT PARK SHOPPING CENTER

South Walnut Street & Country Club Road  
Bloomington, IN

- PROPERTIES
- SERVICES
- FOR INVESTORS
- ABOUT US
- CONTACT US



**BUILDING TYPE**  
Retail/Office/Restaurant  
**Location**

**SF AVAILABLE**  
**1,300 sf**

**CONTACT**  
Debi O'Heran  
debio@wspropertygroup.com  
812.332.9575

**DEMOGRAPHICS**

**Population**  
1 mi. 23,169  
3 mi. 104,569  
5 mi. 127,402

**Average HH Income**

1 mi. \$67,493  
3 mi. \$65,331  
5 mi. \$71,319

### GALLERY





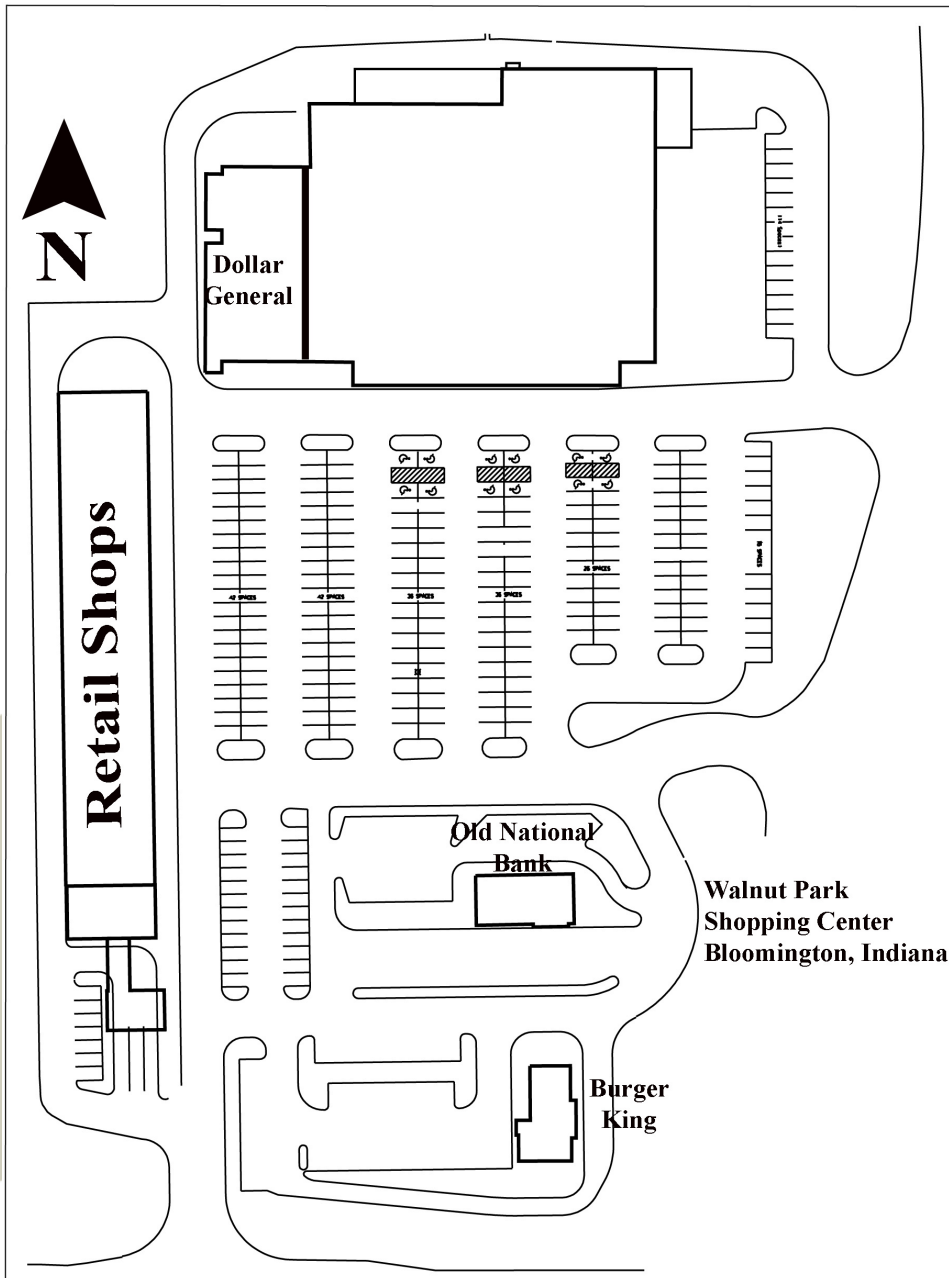




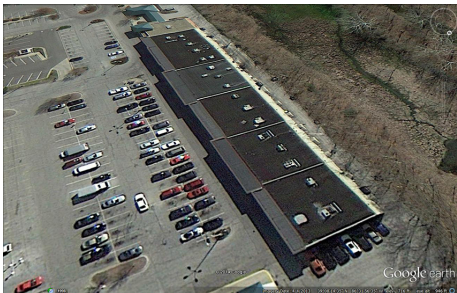


**MAP**





**AERIAL**



## FEATURES

- 1,300 sf available
- 20-25' glass storefronts
- Ample signage
- Well-lit covered walks
- Accessible service areas for deliveries
- retail location on the south side

## LOCATION FEATURES

- 3 ingress / egress points
- signalized intersection
- Free well-lit parking
- Two traffic building outlots

## PROPERTY INFORMATION

**Walnut Park Shopping Center** is a 31,000 sf shopping center positioned at the signalized intersection of Walnut Street and Country Club and supports 38,000 ADT.

This center is on the city bus route, walking distance to schools, YMCA and Winslow Sports complex as well as numerous fast growing residential neighborhoods and apartments. Walnut Park has been the foundation of Bloomington's south side retail trade area for over 25 years.