

CARMICHAEL CENTER

Indiana & Kirkwood Avenue
Bloomington, IN

- PROPERTIES
- SERVICES
- FOR INVESTORS
- ABOUT US
- CONTACT US



BUILDING TYPE
Retail/Restaurant/Office

SF AVAILABLE
3,696 sf

CONTACT
Debi O'Heran
debio@wspropertygroup.com
812.332.9575

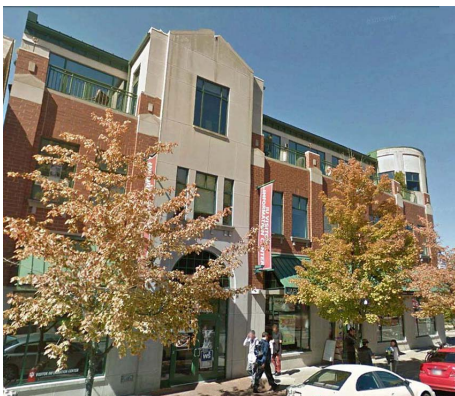
DEMOGRAPHICS

Population
1 mi. 42,656
3 mi. 102,789
5 mi. 133,122

Average HH Income

1 mi. \$49,208
3 mi. \$67,032
5 mi. \$71,482

GALLERY





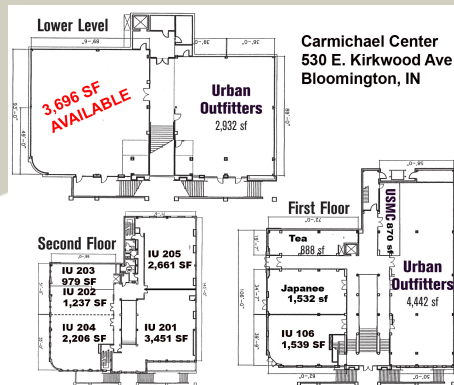




AERIAL



SITE PLAN



FEATURES

- 3,696 sf available
- Two levels of retail space within 4-story atrium
- Spectacular common areas
- Tenants include and Indiana University, Bapu Tea, Varsity Shop, and Urban Outfitters

LOCATION FEATURES

- Across from historic Sample Gates, the entrance to Indiana University
- Heavy pedestrian traffic
- Students, faculty, professionals, residents, tourists
- Retail, restaurant, & office
- 48,952 students enrolled in 2024-2025 school year