

CENTER 37 SOUTH BUILDING

State Highway 37 & Liberty Drive
Bloomington, IN

- PROPERTIES
- SERVICES
- FOR INVESTORS
- ABOUT US
- CONTACT US



BUILDING TYPE
Retail/Office/Restaurant

SF AVAILABLE
0 sf

CONTACT
Debi O'Heran
debio@wspropertygroup.com
812.332.9575

DEMOGRAPHICS

Population
1 mi. 20,632
3 mi. 70,248
5 mi. 125,240

Average HH Income

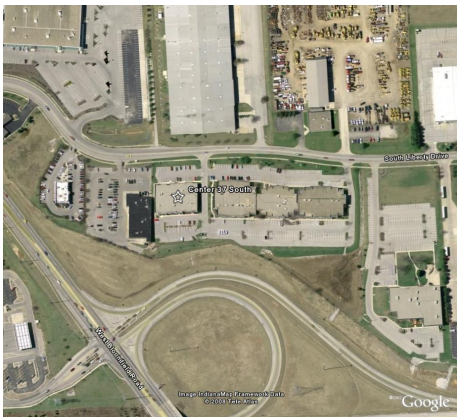
1 mi. \$55,075
3 mi. \$56,490
5 mi. \$63,861

GALLERY

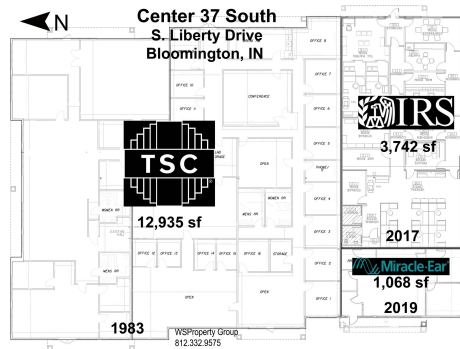




AERIAL



SITE PLAN



FEATURES

- High visibility and easy access to major thoroughfare State Highway 37 (soon to be I69)
- Fast-growing Westside retail location
- Front door parking
- Adjacent to Wal-Mart/Sam's Club, UPS, and Menards

LOCATION FEATURES

- Significant signage available facing Highway 37
- Attractive landscaping
- Plenty of on-site parking
- Indianapolis: 50 minutes
- Chicago: 4 hours
- Louisville: 2.3 hours
- Crane NWSC: 30 minutes

PROPERTY INFORMATION

Center 37 South is an 18,000 sf professional facility. Center 37 South offers a unique opportunity for first class commercial space on Bloomington's booming Westside. Highly visible, easy access, and wide-open interior design; it is located on one of Bloomington's business thoroughfares, Liberty Drive.

Strategically located for commuter traffic, the center is highly visible from Highway 37. Liberty supports 19,500 +/- ADT with plenty of onsite parking for employees and visitors. Surrounding retail: Menards, WalMart SuperCenter, Lowes, Kohls, Sam's Club, K-mart, restaurants, and other big box soft good retail users.

Architecturally appealing, the building is bordered by mature attractive landscaping and the interior was designed for convenience built out to tenant's specifications. Sufficient signage space is available on Highway 37 and/or Liberty Drive.